



Greenstone Estates Limited
83 Boundary Road
St John's Wood
London NW8 0RG

Maida Vale | W9



We are delighted to offer a well proportioned 3 bedroom garden apartment of circa 944 sq ft in a well located period building, benefiting from off street parking, private patio and large communal garden. Accessed via a private front door the property boasts reception room with bay window to rear aspect, separate kitchen, master bedroom, double bedroom currently arranged as dressing room with shower, further double bedroom and a family bathroom.

The property could benefit from updating and therefore makes for a very good opportunity for someone looking to create a home to their own style.

Ideally located close to the amenities of Maida Vale and within a short walk to Maida Vale Underground (Bakerloo line)

Please call for more information or an appointment to view.

£775,000

Lettings: 020 7625 1000
Sales: 020 7625 7000



www.greenstone.com



www.facebook.com/greenstoneproperty

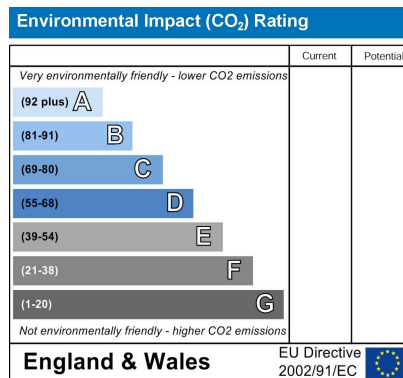
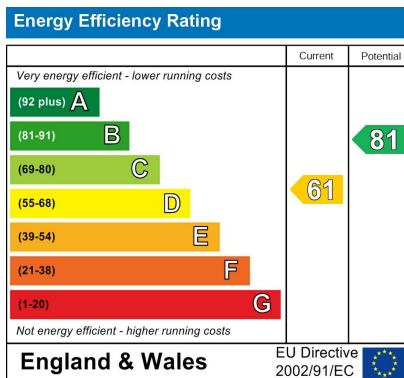


www.twitter.com/lewisgreenstone



www.youtube.com/user/greenstone





Lettings: 020 7625 1000
Sales: 020 7625 7000



www.greenstone.com



www.facebook.com/greenstoneproperty



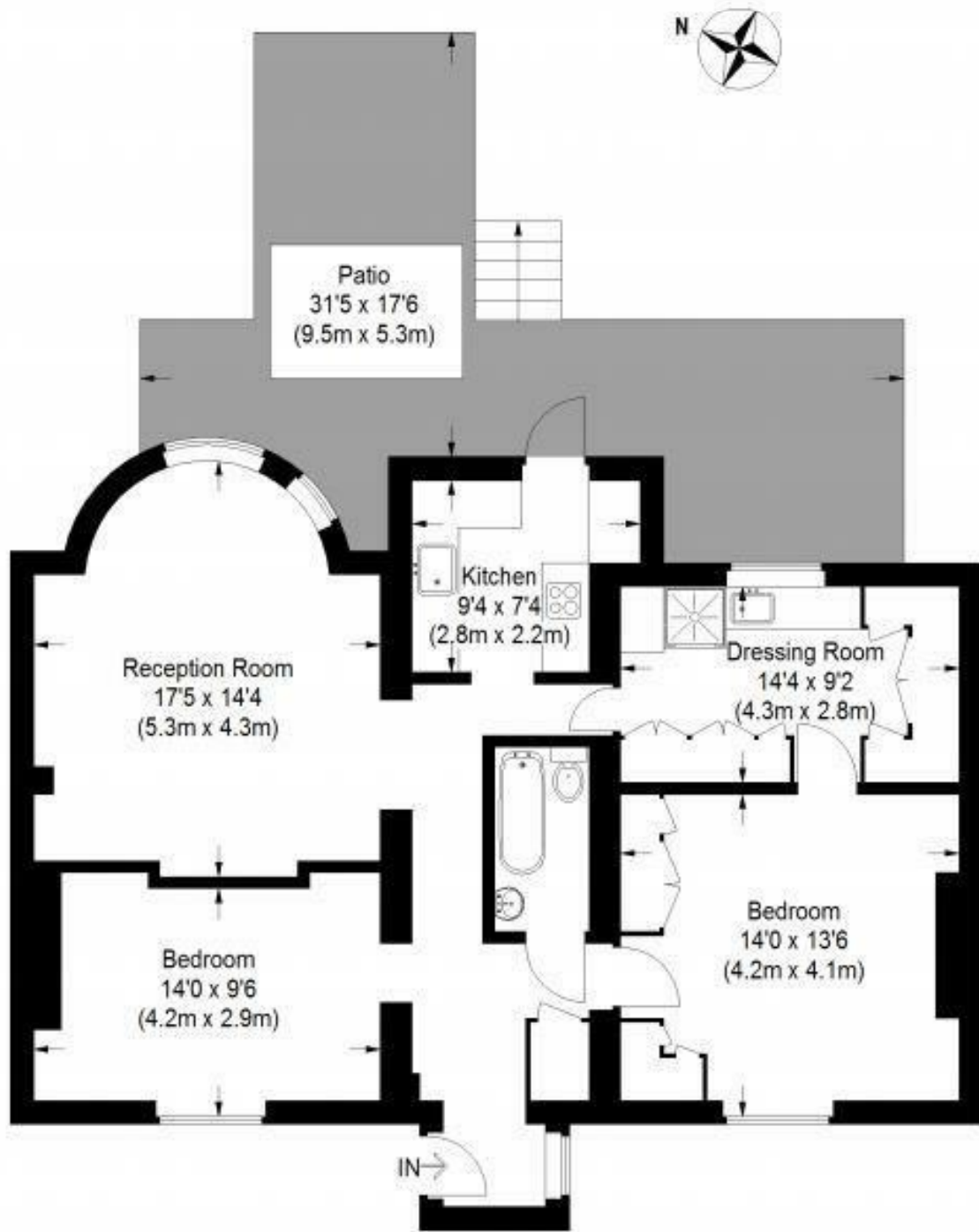
www.twitter.com/lewisgreenstone



www.youtube.com/user/greenstone



Approximate Gross Internal Area
944 sq ft / 87.7 sq m



Lower Ground Floor

IMPORTANT NOTICE All of the information is intended only as a guide to a prospective purchaser and does not constitute any part of an offer or contract. Any measurements or distances referred to herein are approximate only. Any information contained herein (whether in the text, plans or photographs) is given in good faith and cannot be relied upon as being a statement or representation of fact. Should you proceed with the purchase of the property, your solicitor must verify these details. We have not carried out a detailed survey nor tested the services, appliances and specific fittings. In accordance with current legislation we would advise you that the measurements on these particulars are imperial. The formula for conversion to metric is as follows:- 1' (one foot) = 30.4cm (centimetres), 1m (one metre) = 3'29 (feet).